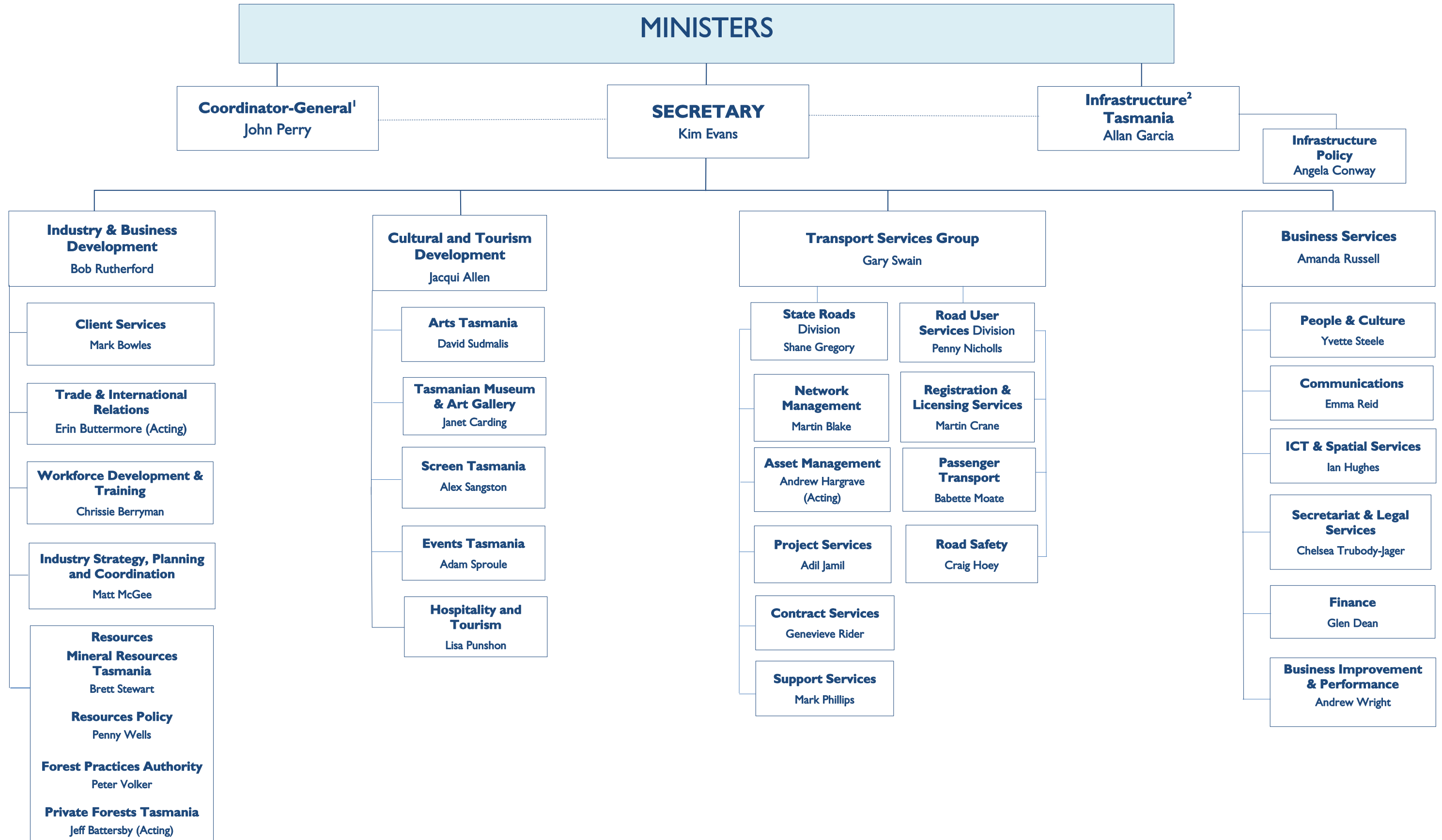


DEPARTMENT OF STATE GROWTH – ORGANISATIONAL STRUCTURE (3 May 2017)



¹The Coordinator-General reports directly to the Minister for State Growth and will also report to the State Growth Committee of Cabinet on major projects where appropriate.

²Chief Executive of Infrastructure Tasmania will also report to the Treasurer.