



TASMANIAN POLAR NETWORK

BUSINESS DIRECTORY

THE WORLD'S RICHEST
RESOURCE OF ANTARCTIC &
SOUTHERN OCEAN EXPERTISE

FOREWORD



Welcome to the first official directory of goods and services provided by Tasmanian Polar Network members.

The businesses listed in this directory are all uniquely positioned through their geographical location, expertise and resources to serve the broadest possible range of activities required by Antarctic and Southern Ocean programs.

They are experts in their field, and many have been successfully involved with hundreds of Antarctic region expeditions or projects. These businesses are managed and staffed by people who are passionate about the sector and who understand particular customer requirements. When you deal with a Tasmanian Polar Network member you can expect outstanding advice, support and service. For more information contact our secretariat at Antarctic Tasmania on **+61 (0) 3 6233 5493** or email **antarctic@development.tas.gov.au**.

I am proud to commend these products and services to you. We look forward to serving all those who wish to participate in scientific endeavour and economic activity within the region long into the future.

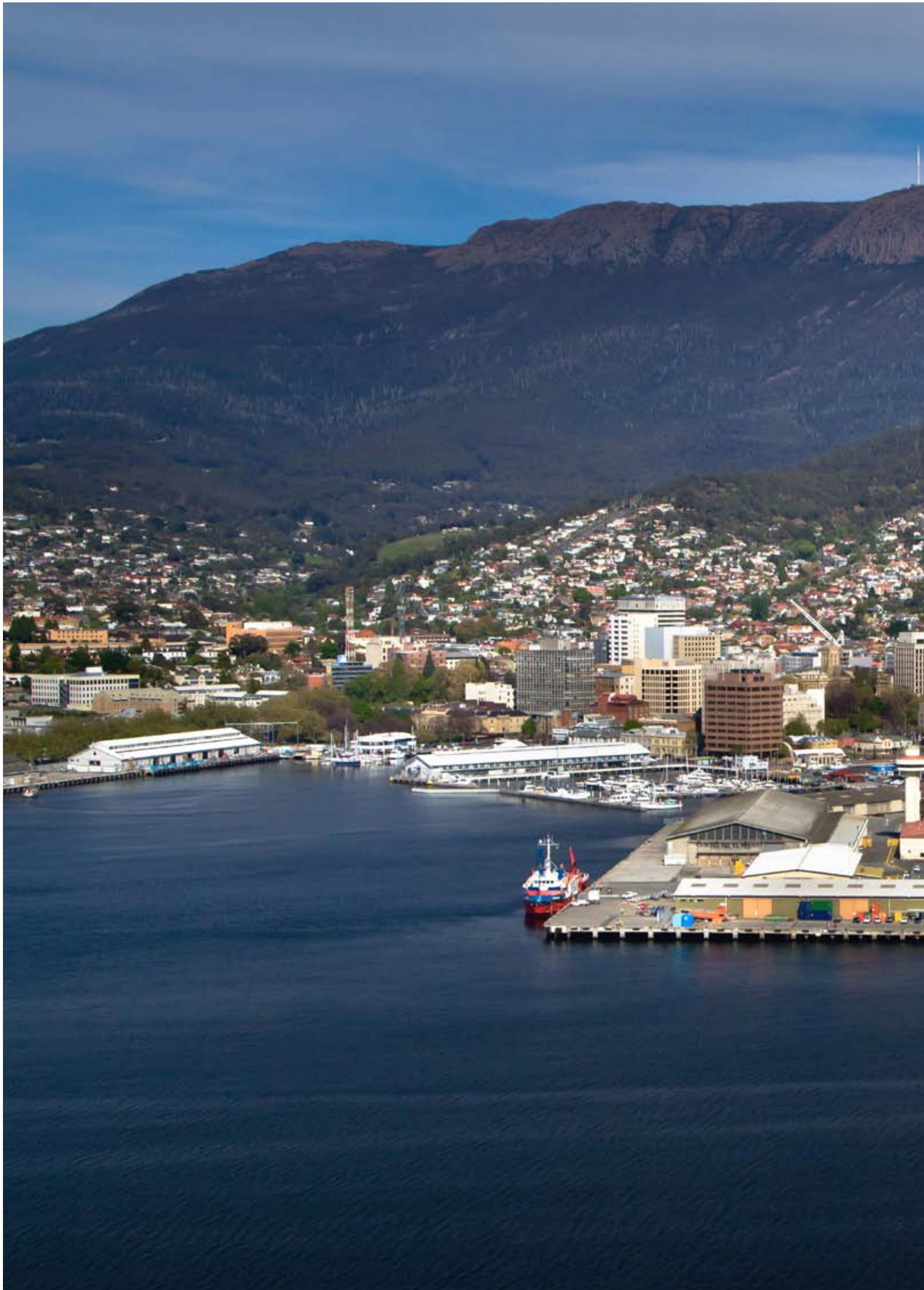
A handwritten signature in black ink, consisting of a stylized 'J' and 'B' followed by a long horizontal line.

John Brennan

Chairman
Tasmanian Polar Network









TASMANIAN POLAR NETWORK

The world's richest resource of Antarctic and Southern Ocean expertise.

If you need to access products or services for operations in Antarctica, the sub-Antarctic or Southern Ocean the Tasmanian Polar Network is your unique no-fee, no-fuss conduit.

An organisation of more than 50 members drawn from all areas of Tasmania's flourishing Antarctic community; TPN can provide advice, assistance and referrals to businesses that understand polar conditions.

TPN's Hobart secretariat was established by the Tasmanian Government to serve as a single point of contact for all Antarctic-related business enquiries, offering clients effortless connections to private businesses, educational institutions, research bodies and government agencies.

Network members can provide a wide range of goods and services. The benefits of the network are not limited to 'off-the-shelf' products; the experience and expertise of members enables them to develop sophisticated solutions to client's needs, and tailor goods and services to meet specific requirements.

TPN members deliver high-quality products and services especially suited for use in Antarctic and Southern Ocean conditions.

- P.** +61 (0) 3 6233 5493
- E.** antarctic@development.tas.gov.au
- W.** www.tasmanianpolarnetwork.com

INDEX

Advice, secretariat and government services

Antarctic Tasmania 8

Shipping

P&O Maritime Services 19

Tasports 24

Shipping agents, provedores, port services, freight handling

Monson Shipping Pty Ltd 18

Tasmanian Shipping Supplies 23

Tasmanian Worldwide Shipping 23

Tasports 24

Specialist ship services

CBG Systems 11

Taylor Bros 24

Maritime consultancy

McGuire Consulting 17

Air transport

Helicopter Resources 13

Hobart International Airport 13

Skytraders 21

Marine and Antarctic fuels and gases

BP Marine 10

Heavy machinery, construction and traverse equipment

Atlas Copco 9

Elphinstone Engineering 12

Saunders and Ward 20

William Adams Pty Ltd 26

Prefabricated and modular buildings

Elphinstone Engineering 12

Icwall One 14

Penguin Composites 20

Taylor Bros 24

Fire, thermal and acoustic insulation systems

CBG Systems 11

Scientific and communication equipment

Imbros 14

Marcom-Watson 16

Moonraker 18

Turo Technology Pty Ltd 25

Cold climate clothing

Smitten Merino 22

Southern Cross Equipment 22

Specialised cold climate and general engineering

APCO Engineering 8

Elphinstone Engineering 12

Saunders and Ward 20

Taylor Bros 24

Specialised tools and equipment

Atlas Copco 9

JSB Investments 15

Southern Cross Equipment 22

Field operations and logistics support

Lester Franks 15

SKM 21

Environmental services

Brennan Environmental 11

Veolia Environmental Services 25

Meteorological and oceanographic services

Australian Bureau of Meteorology 10

Metoccean Services International 17

Engineers and consultants

Cold Climate Consultancy Services 12

Lorne Kriwoken 16

SKM 21

Arts, culture and tourism

Aurora Expeditions 9

Oceanides 19



ANTARCTIC TASMANIA

Antarctic Tasmania is the Tasmanian Government agency dedicated to supporting the Antarctic sector in Tasmania. We work collaboratively with cold-climate businesses, Antarctic and Southern Ocean research institutions, and other industry bodies to develop and promote Antarctic science and industry activity.

The unit also provides secretariat and strategic support to the Tasmanian Polar Network and works closely with members on their projects.

If you are interested in doing business in Tasmania and need support for your Antarctic, sub-Antarctic, Southern Ocean or cold climate endeavours, the unit can:

- introduce you to business, government and science and research organisations
- help you source goods and services, including customised products
- provide general advice on Antarctic sector, Hobart and Tasmania.



MARY WOOLNOUGH

P. +61 (0) 3 6233 5493
E. antarctic@development.tas.gov.au
W. www.antarctic-tasmania.com

APCO ENGINEERING

APCO Engineering produces high-quality cast and machined components and fittings in ferrous and non-ferrous metals. These include corrosion-resistant hydraulic actuators, aluminium deck hatches, bulkhead shaft seals, aluminium and stainless steel pipe fittings and custom-made parts to suit specific requirements, including polar operations.

The company has manufactured parts for the Australian Antarctic Division, the CSIRO Marine Laboratories and for the Australian marine research vessel *Southern Surveyor* and the French Antarctic vessel *Astrolabe*.

In-house foundry and machine shop facilities are backed up by years of experience. APCO can respond quickly to customer needs and produce parts to customer specifications.

The modern foundry is equipped with the latest technology, including a solid metal spectrometer, solidification simulation software and electric induction melting furnaces. This ensures total control of production processes and guarantees customers that APCO products have the highest casting and metal quality.

A modern machine shop incorporates CNC lathes and machining centres and CAD/CAM technology, as well as a range of conventional machine tools that can accurately machine the most challenging profiles.



ANDREW PERKINS

P. +61 (0) 3 6272 8344
E. Andrew@apcoengineering.com
W. www.apcoengineering.com

ATLAS COPCO

Atlas Copco is a world leader in construction and surface drilling equipment. Atlas Copco's range of equipment includes hand-held pneumatic, hydraulic and petrol driven breakers, stationary compressors, chipping hammers and rockdrills, small to heavy rig-mounted hydraulic breakers, silent demolition tools and accessories. Surface drill rigs and mobile crushers and screeners for quarries are also available.

Atlas Copco is a leader in automation and all Atlas Copco drills, trucks and loaders are equipped with RCS (Rig Control System). This computerised control system improves accuracy, productivity and drill steel economy for the rigs. Other benefits of RCS include faster fault detection, lower maintenance costs and enhanced rig availability.

Our products are made to withstand hostile environments including Antarctica where Atlas Copco construction and industrial drilling equipment is used at Australia's Casey station.

Atlas Copco has offices in over 170 countries with over 37 000 employees worldwide. In Tasmania, John Stanton and the team at Atlas Copco's Burnie branch have been serving industry for over 40 years. The Burnie facility offers service exchange, service and parts support for all Atlas Copco's construction equipment.



JOHN STANTON

P. +61 (0) 3 6435 1503
E. john.stanton@au.atlascopco.com
W. www.atlascopco.com.au

AURORA EXPEDITIONS

Aurora Expeditions is an Australian-owned adventure company specialising in expedition cruises to wild and remote places.

Pioneers of expedition travel to Antarctica and always travelling in small groups, Aurora Expeditions provide their travellers with the chance to have an intimate experience in these regions with their flexible, innovative itineraries.

The aim of each voyage is to provide as many landings as possible, allowing passengers to experience the destination first hand. Each voyage is led by an expedition team of expert naturalists, geologists, historians, staff and crew who help to unlock the wonders of these special places.

Deeply committed to education and preservation of the environment, Aurora Expeditions' philosophy is to respectfully visit these wilderness areas in turn creating ambassadors for their protection.



AURORA EXPEDITIONS

P. +61 (0) 2 9252 1033
E. info@auroraexpeditions.com.au
W. www.auroraexpeditions.com.au

AUSTRALIAN BUREAU OF METEOROLOGY

The Bureau of Meteorology has a statutory responsibility for Australian meteorological activities in Antarctica. It established a weather observing station at Australia's Mawson base in 1954 and has compiled the longest continuous weather record on the Antarctic continent. The Bureau maintains weather offices and year round observation programs at the three Australian Antarctic Stations as well as at Macquarie Island Station, with the meteorological activities of all the offices being coordinated by the Bureau's Tasmania and Antarctica Regional Office, which is located in Hobart.

The Bureau provides a range of specialised Antarctic forecasting services to the Australian Antarctic Program, including providing weather forecasts for all its air, sea and land-based operations. Some of these operations are performed by our meteorologists at Casey and Davis Stations during summer.

The Bureau can also provide comprehensive information on Antarctic climate data and weather forecasts and observations for the region.

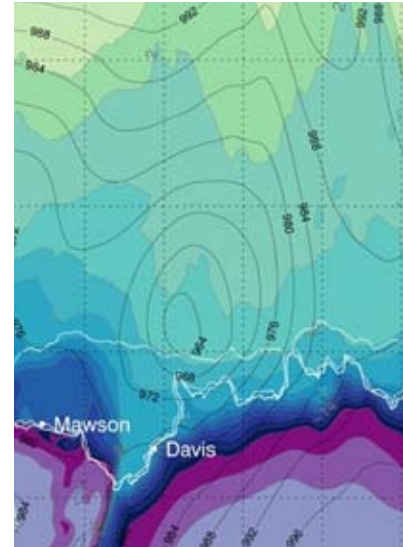
The range of information includes:

- satellite imagery
- a catalogue of Antarctic climate data
- the latest observations from Australia's Antarctic stations (updated hourly)
- mean sea level pressure and ocean wave height data.

In addition to its statutory and other government functions, the Bureau can provide specialist weather forecasting services to vessels at rates negotiated on a case-by-case basis.

For Antarctic and Southern Ocean weather forecasts visit:

www.bom.gov.au/weather/ant/



STEVE PENDLEBURY

P. +61 (0) 3 6221 2000
E. s.pendlebury@bom.gov.au
W. www.bom.gov.au

BP MARINE

BP Marine has been supplying fuel products to customers operating in the Antarctic and Southern Ocean for more than 10 years. It is one of the world's leading suppliers of fuels, lubricants and technical services to the global marine industry.

BP Marine's Hobart Terminal at Selfs Point is part of a global presence. The company supplies some of the largest container, tanker and bulk shipping businesses in the world with high-quality fuels, technologically advanced lubricants and a wide range of services.

Committed to safety and the environment, BP Marine can supply lower-sulphur fuels, biodegradable lubricants and trading solutions. It is also rolling out a program of upgrading infrastructure at its existing ports, further underlining its long-term commitment to the maritime industry.

BP Marine has a product suited to your needs.

Marine Fuels

- Marine Gas Oil to a DMA 2010 specification is available ex-pipe at BP's Hobart Terminal at Selfs Point and by truck at other berths in the port
- BP Special Antarctic Diesel is also available ex pipe at Selfs Point or by truck at other berths. This product has unique characteristics with an exceptionally low freezing point, enabling operation in temperatures as low as -35°C . It can be used in engines operating in Antarctic conditions.

Ground Fuels

- unleaded petrol in drums
- winter grade unleaded petrol in drums
- diesel in bulk and drums.

Aviation Fuels

- Jet A1 FSII in bulk and drums
- Jet A1 in bulk and drums.



EDDIE GAUCI

P. +61 (0) 3 9268 4485
E. www.bpmarineanz@bp.com
W. www.bp.com

BRENNAN ENVIRONMENTAL

Brennan Environmental has over 10 years' experience working with Antarctic waste, recycling and hazardous substances, including contaminated sites.

John Brennan, Principal of Brennan Environmental, is based in Hobart, Tasmania and has worked in Antarctica with both the Australian and French Antarctic programs, making him Australia's most experienced Antarctic waste consultant.

Brennan Environmental's broad network of contacts through government and industry and knowledge of environmental, quarantine and Basel regulations for imported Antarctic waste ensures customers receive an efficient, compliant and professional service.

Brennan Environmental's services include:

- Basel import permit and quarantine applications and negotiations
- advocacy to regulators, local and state government
- waste and recycling solutions, with an emphasis on diversion from landfill and recovery of materials
- environmental reporting
- Antarctic site/station waste assessments
- cold climate remediation experience.



Photo: J Stark

JOHN BRENNAN

P. +61 (0) 400 478 666

E. brennanenvironmental@bigpond.com

W. www.brennanenvironmental.com.au

CBG SYSTEMS

CBG Systems is a Hobart-based Australian company specialising in the supply and installation of fire, thermal and acoustic insulation systems for a range of marine, industrial and commercial clients.

CBG Systems has extensive experience managing remote projects around the world and, in particular, servicing projects for the Antarctic region.

For more than 30 years, CBG Systems has been a leading innovator, setting benchmarks in the marine insulation and lightweight passive fire-protection industry.

Products are designed to save lives – and save money. CBG Systems is recognised for excellence by the US military and by merchant marine and military operators worldwide.

Product Range:

- Rapid Access Navy-30 (RAN-30) – N-30 structural fire protection
- Rapid Access Composite – 60 minutes fire resisting division
- Rapid Access Stainless & Light-Weight Stainless – A-60 structural fire protection
- Profile Wrap Passive Fire Protection System
- internal partition systems and flammable storage units
- fire boundary devices
- exhaust jackets & high temperature insulation
- insulation of tanks, piping & HVAC systems
- thermal insulation
- industrial shut downs.



JAVIER HERBON

P. +61 (0) 3 6272 6105

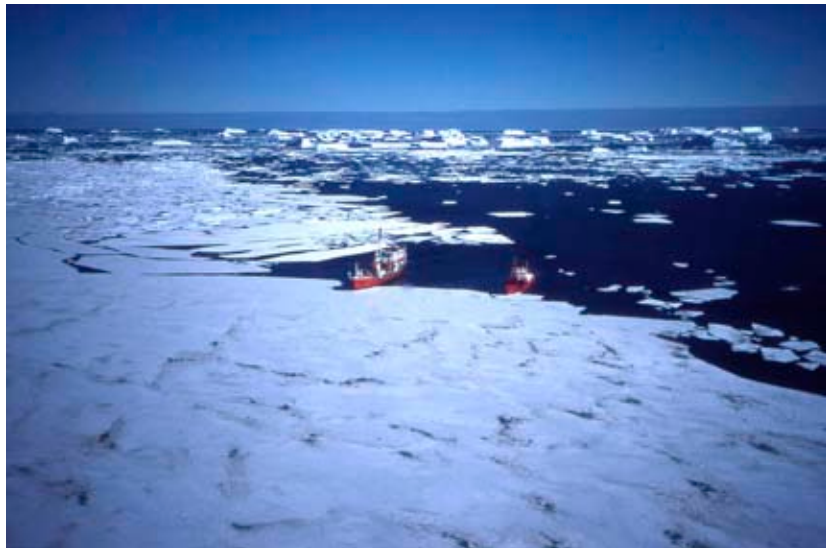
E. jherbon@cbgsystems.com

W. www.cbgsystems.com

COLD CLIMATE CONSULTANCY SERVICES

Cold Climate Consultancy Services, based in Hobart, specialises in ice-class shipping charters and contract management, cold-climate and remote environmental practices, aircraft contracting, logistics and forward planning.

Principal Geoff Dannock has 20 years of involvement and leadership in the provision and management of Antarctic, marine and remote logistics support for a major national scientific organisation.



GEOFF DANNOCK

P. +61 (0) 417 367 254
E. geoffdan@netspace.net.au

ELPHINSTONE ENGINEERING

Working closely with expeditioners, Elphinstone Engineering designs and manufactures polar-traverse and base-construction equipment specifically for use in Antarctica. These include traverse trailers, sleds, turntables, suspensions, and heavy equipment transporters.

The company has also developed a simple, bolt-together system for building frames, walkways and stairways for Antarctic base stations. These are designed for ease of assembly in the field.

Elphinstone Engineering has more than 25 years' experience in building equipment suitable for Antarctic conditions and has undertaken work for the Australian, Italian and French Antarctic programs. Graeme Elphinstone has completed three traverses with the French expeditionary team, providing him with first-hand knowledge of design requirements in such harsh conditions. Elphinstone can supply a comprehensive range of spare parts that are easily shipped through the Port of Hobart.



GRAEME ELPHINSTONE

P. +61 (0) 3 6257 3242
E. graeme@elph.com.au
W. www.elph.com.au

HELICOPTER RESOURCES

With over 30 years and 30,000 flying hours of Antarctic experience, Helicopter Resources can claim an enviable record in the service and support of Antarctic operations.

Helicopter Resources is wholly Australian owned and one of Australia's longest established helicopter companies. It has operated a diverse helicopter fleet throughout Australia and many parts of the world since 1970. Helicopter Resources has worked in Antarctica since 1975, providing extensive operational support in this rugged and hostile environment. The company has supported the national Antarctic expeditions of Australia, China, Japan, Germany, Italy and Pakistan, providing helicopters, pilots and expert engineers.

Helicopter Resources is committed to safety, reliability and customer satisfaction. Highly professional pilots carry out customers' tasks with maximum efficiency and the highest level of safety possible.



SIMON TAYLOR

P. +61 (0) 3 6248 5130

E. adminhobart@helires.com.au

W. www.helires.com.au

HOBART INTERNATIONAL AIRPORT

Hobart International Airport, 17km east of the Tasmanian capital, is the home base for the Australian Antarctic Division's aviation program. The airport utilises a single 12/30 runway of 2,251 metres with an asphaltic-concrete surface. The airport has no curfew.

The runway is suitable for unrestricted operations for aircraft up to B767/A300/A320.

B747, B777 and their equivalents can operate with weight restrictions. Hobart airport can provide clients with warehousing and associated facilities and offers the opportunity to develop aviation-related facilities to support Antarctic air transport needs.

The Australian Antarctic Division's program operates regular intercontinental summer-season flights to Wilkins Aerodrome, a blue glacial-ice runway near Casey Station. The flight time for an Airbus A319 passenger jet between Hobart and Wilkins is approximately 4.5 hours. The link is an efficient option for moving scientists, expeditioners and high-priority cargo.



STEVE KOTCHARIAN

P. +61 (0) 3 6216 1619

E. Skotcharian@hiapl.com.au

W. www.hobartairpt.com.au

ICEWALL ONE

IceWall One produces pre-fabricated, insulated fibreglass accommodation units called Igloo Satellite Cabins, as well as PolyPod Snowcamper Sledges. These products and accessories are made to order in Tasmania, under licence by Penguin Composites.

Both products are designed for use in remote locations and can be flown fully assembled by helicopter. Disassembled units can be transported by road, sea or air.

Igloo Satellite cabins provide safe, reliable accommodation for exploration and research in remote areas and are customised to suit specific requirements. Basic Igloos are 3 metres in diameter by 2.1 metres high and can be fitted out to suit individual needs. Extended or interlinked units cater for a greater variety of purposes.

A PolyPod Snowcamper is a pre-fabricated, insulated, fibreglass sledge designed to be towed. The windproof canopy is spacious enough for two people and provides excellent protection for delicate instruments and photographic equipment. A PolyPod can be towed by a small ATV or the top used as a tent and the base used as a punt.

For over 30 years, these products have been purchased by more than 40 institutes and organisations in 19 countries, with the majority still in use in Antarctica.



ANTHEA WALLHEAD

P. +61 (0) 3 6267 4774
E. anthea@icewall.com.au
W. www.icewall.com.au

IMBROS

Imbros is a leading Australian laboratory and marine science equipment supply company. Imbros services clients and organisations in the Antarctic region, as well as throughout Australia, New Zealand and the Asia-Pacific.

Instruments regularly provided to the scientific community and industry include: wave and current meters; CTDs for profiling and mooring; sediment and turbidity loggers; optical sensors; other water quality sensors; telemetry systems; remotely operated vehicles (ROV); and accessories, including multi-beam sonars, automation software and water-quality sensors.

Imbros sources cutting-edge oceanographic technology from around the world for clients in the region it services.

Our laboratory supplies instrumentation and consumable products to all types of laboratories throughout Australia.



MARTIN HILLS

P. +61 (0) 3 6216 1500
E. info@imbros.com.au
W. www.imbros.com.au

JSB INVESTMENTS

JSB Investments has three business arms:

- Brierley Hose and Handling
- Tas Lifting
- Brierley Marine.

Based in Hobart, the company holds large stocks and is a supplier to the Australian Antarctic Division and P&O Maritime Services. Products supplied to these polar customers include:

Hose and Handling

- hoses and fittings
- materials handling products.

Lifting

- on-site support and maintenance utilising a Mobile Hydraulic Service
- lifting gear, including on-site testing; hoist and crane servicing and inspection.

Marine

- marine division pumps
- rope and cordage
- valves
- engine mounts
- anchor and mooring chains
- buoys and fenders anchors.

JSB Investments is supported by worldwide manufacturers.



JOHN BRIERLEY

P. +61 (0) 3 6272 8144
E. sales@brierleyhose.com.au
W. www.brierleyhose.com.au

LESTER FRANKS

Lester Franks is a Tasmanian-based national spatial information business. Over 45 years it has built its success on establishing successful partnerships with its clients.

Key services are:

- surveying
- town planning
- GIS
- laser scanning
- laser alignment.

Lester Franks carries ISO 9001 and AS4801 accreditations.



MALCOLM LESTER

P. +61 (0) 3 6231 2833
E. mlester@lesterfranks.com.au
W. www.lesterfranks.com.au

LORNE KRIWOKEN

Dr Lorne Kriwoken is a consultant specialising in environmental management, sustainable polar tourism and polar heritage interpretation.

His polar experience involves conducting environmental impact assessments and audits for Antarctic and Arctic seaborne and airborne tourism companies and research for the Australian Antarctic Division. He has lectured for polar tourism expeditions in the Antarctic Peninsula, Falkland Islands, South Georgia, Macquarie Island, the New Zealand sub-Antarctic islands, Ross Sea and Antarctic overflights from Australia.

He is author and publisher of Polar Pathways: Exploring Tasmania's Antarctic Heritage. With Polar Pathways he offers interpretation and guiding on historic and contemporary polar connections between Antarctica and Tasmania. He has degrees in environmental science from Simon Fraser University, Dalhousie University and the University of Tasmania.



LORNE KRIWOKEN

P. +61 (0) 3 6226 2458
E. l.k.kriwoken@utas.edu.au
F. + 61 (0) 3 6226 2989

MARCOM-WATSON

Marcom-Watson has been providing specialist electronics services to commercial and private shipping, fisheries and research bodies since 1965. Today, the Tasmanian-based business represents some of the world leaders in these fields.

Additionally, it represents many leading companies in land, maritime, audio visual and automation and control electronics.

Marcom-Watson can recommend, supply and support a wide range of:

- marine electronics for all boats and ships; scientific, navigation and communications, systems integration; and special applications for vessels of all sizes
- communications equipment and systems for land, marine, satellite and aeronautical applications in all frequency bands, including the very latest in digital technologies

- advanced meteorological monitoring systems with full remote access and multi-site connectivity.
- hydrographic survey equipment and systems

As well as providing products, Marcom-Watson can assist with:

- advice on the correct selection and application of products to suit your requirements
- custom software and hardware for full system integration
- full design and installation from concept to completion
- maintenance support, either casual or contract.

Marcom-Watson's continuing success can be attributed to quality in product selection and high level client support.



ERIC SMITH

P. +61 (0) 3 6323 8800
E. sales@marcomwatson.com.au
W. www.marcomwatson.com.au

McGUIRE CONSULTING

Based in Tasmania, McGuire Consulting is a leading international maritime consultancy. Its expert staff have worked with the Australian Antarctic Division, undertaken searches for and inspections of Antarctic-capable vessels, acted as owner's representative for tourism operating vessels using Hobart as a departure point and coordinated repairs for Antarctic tourism vessels.

The company specialises in operations, compliance and education. It assists clients by providing the necessary expertise and support to enhance the way in which their business operates.

Services include:

- vessel operations, including ship management, inspections, sourcing and delivery
- port call management
- vessel repair coordination
- auditing of vessel management systems
- crewing of vessels and voyage planning.

McGuire Consulting's industry professionals develop specific solutions to each assignment. Solutions are based on intimate knowledge of the shipping industry and understanding of the business' operating regime.



CHRIS McGUIRE

P. +61 (0) 407 053 457
E. chris@mcguireconsulting.com.au
W. www.mcguireconsulting.com.au

METOCEAN SERVICES INTERNATIONAL

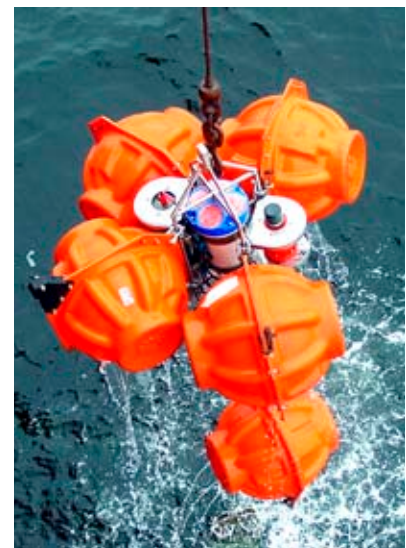
Metocean Services International (MSI) is a global provider of oceanographic and meteorological (metocean) measurement services to the oil and gas industry, coastal engineers, dredging companies and port authorities.

MSI's management group has more than 50 years' experience in the maritime industry and is supported by a team of dedicated and experienced oceanographers, data processors and engineers. Through its offices in Hobart and Cape Town – and using an extensive and growing resource of state-of-the-art equipment – MSI has conducted successful operations in more than 30 countries. MSI's main focus is the collection and processing of metocean data. All measurement equipment can be deployed separately or integrated into a larger metocean system. Where data is required in real-time, this is achieved professionally by using cable, radio, GSM or satellite transmission systems.

Services include:

- wave measurements
- water level/tidal measurements
- meteorological measurements
- desktop studies
- software and database development and hosting
- project management
- marine weather/route forecasting
- environmental studies.

MSI is also the exclusive Australian representative of RBR Ltd (manufacturer of subsea data loggers, CTDs, tide gauges, etc.); AXYS Technologies (wave buoys and marine instrument platforms); and MetOcean Data Systems (marine tracking solutions).



STEFAN STIMSON

P. +61 (0) 3 6224 0788
E. stefan@metoceanservices.com
W. www.metoceanservices.com

MONSON SHIPPING PTY LTD

Monson Shipping Pty Ltd is a Tasmanian-based shipping agency that has worked with both the Australian Antarctic Division and Quark Expeditions and is currently acting as their shipping agent.

Monson Shipping specialises in liner and bulk shipping. Through three offices in Tasmania, the company acts as agent for a range of shipping lines covering the globe and can also act as agent in other Australian ports through its affiliation with shipping agencies based in these respective ports.

The largest shipping agency based in the State, Monson Shipping employs staff with over 20 years of shipping industry experience.

Through Monson Logistics the company also offers line haul services within Tasmania through a fleet of prime movers. The business can provide a door-to-door service for FCL freight within Australia.



ANDREW LEE

P. +61 (0) 3 6236 9177
E. ops@monship.com.au

MOONRAKER

Antarctica is a challenging environment and one day an expedition may be faced with the ultimate challenge. This is something Moonraker appreciates and factors into its systems, because a Moonraker antenna may be called on to save your life.

Moonraker has a long history of production for cold climate environments and its commitment to excellence has resulted in antennas that can survive 250 km/h cyclonic winds in temperatures as low as -30°C at the Poles. They can also handle 50°C with 100 per cent humidity in the tropics.

Antennas are available from LF to UHF for land installations – including close-in NVIS systems for local area networks – and for all types of vessels from trailed craft to ocean-going ships. Special types are designed for emergencies, high power transmission, and GMDSS. New systems can be designed or adapted to suit customer requirements.

And because safety at sea depends on so much more, Moonraker also has designed a range of high-performance accessories, from radio earth plates and insulators to marine lightning protection including lightning rods, horn gap arrestors, coaxial surge suppressors and protection for DC and AC equipment and electronic devices.

All systems are engineered to give you the best performance – year after year.



GERALDINE EDWARDS

P. +61 (0) 3 6273 1533
E. radiocom@moonraker.com.au
W. www.moonraker.com.au

OCEANIDES

Oceanides is a unique business combining art and science in contemporary jewellery. Dr Karin Beaumont's appreciation of the beauty of microscopic plankton forms during her scientific research led to the establishment of the business. Believing that such beauty should not be restricted to the eyes of scientists, Dr Beaumont translates nature's minute beauty into objects of wearable art.

The Aluma bracelet (pictured), available in two styles and a range of colours, is adjustable and gift-boxed with its own unique story.

Working with precious and non-precious metals, Oceanides' creations provide a choice for both women and men spanning earrings, bracelets, pendants, brooches, cuff-links and lapel pins.

Oceanides jewellery can be found in retail galleries around Australia, online at Blue Caravan design market and in gift shops aboard Antarctic cruise ships. Proudly hand-crafted in Tasmania, it provides a unique gift for those passionate about Antarctica, marine life and intriguing design.



KARIN BEAUMONT

P. +61 (0) 429 432 090
E. info@oceanides.com.au
W. www.oceanides.com.au
www.bluecaravan.net/oceanides

P&O MARITIME SERVICES

P&O Maritime Services is recognised as a premier provider of specialist maritime service solutions to governments and industry.

P&O Maritime Services is the owner, operator and manager of a niche fleet of vessels that facilitate the provision of tailored and dedicated shipping solutions to meet the long-term requirements of customers. These services include marine science, Antarctic re-supply, offshore oil and gas support and cargo transport.

The company owns and operates both Australia's *Aurora Australis* and the French *Astrolabe*. These highly sophisticated Antarctic research and re-supply vessels are capable of operating in tropical as well as polar regions and both are available during the Antarctic winter for logistic, oceanographic and fisheries research programs elsewhere.

The capabilities of these vessels are backed up by other vessels managed by P&O Maritime Services, which may also be available for charter. P&O is the owner/manager of the multi-purpose survey support/research vessel *Southern Supporter* and is manager of the research vessel *Southern Surveyor*.

P&O Maritime Services has operations in Australia, Papua New Guinea, Argentina, Ireland, United Kingdom, Dubai and Singapore. The company has a representative office in South Africa.



DAVID VAUDREY

P. +61 (0) 3 6221 5111
E. david.vaudrey@pomaritime.com
W. www.pomaritime.com

PENGUIN COMPOSITES

Penguin Composites has been designing, developing and manufacturing innovative fibreglass and metal products since 1976.

In collaboration with clients the Tasmanian company designs and manufactures unique composite products to meet individual needs, whether they are for industrial, commercial, recreational or marine applications. Capabilities include design and engineering of moulds and plugs, fibreglass and composite component manufacturing and specialist composite product manufacturing.

Penguin Composites' experience and attention to detail delivers products that are found in all kinds of conditions, including Antarctica. We manufacture Igloo Satellite Cabins exclusively for IceWall One, as well as wall components used in Antarctic bases. The wall components stack six units per shipment and facilitate the rapid construction of Antarctic buildings.

A fibreglass resin-transfer moulding technique delivers quick manufacturing turn-around and customisation for specific customer requirements.

Diversity, experience and attention to detail set Penguin Composites apart from its competitors.

A complete "start to finish" service, with seamless project functions, can eliminate the need for external consultations or outsourced components. This is hugely advantageous in the current market, where time and cost reductions are usually of utmost importance.



JOHN VAN DER WOUDE

P. +61 (0) 3 6437 2791
E. ceo@penguincomposites.com.au
W. www.penguincomposites.com.au

SAUNDERS AND WARD

Saunders and Ward manufactures a wide range of customised equipment for the Australian Antarctic Division, including containerised fuel tanks, containers, structural steelwork, satellite tracking towers, wind tower cool porch steelwork, 20 tonne capacity traverse sleds, a 50 tonne four wheel compaction roller, a 50 tonne three wheel compaction roller and 80 tonne proof roller and a mess van sled.

The company has the capacity to undertake projects from the simplest to the most complex. For over 90 years Saunders and Ward has been providing a wide range of steel fabrication, machining and general engineering work, completed to strict quality and performance guidelines.

Our steel fabrication workshop and machine shop utilise the latest equipment. Experienced and highly skilled staff can manufacture complex steel parts and complete items of equipment in-house, from start to finish. This saves clients time and money and enables Saunders and Ward to pass on the benefit of a quality-controlled finished product at a competitive price.

Over the past 18 years, Saunders and Ward has manufactured a wide range of specialised equipment for the Australian Antarctic Division's Antarctic program.



NICHOLAS SAUNDERS

P. +61 (0) 3 6211 8050
E. enquiries@saunward.com.au
W. www.saunward.com.au

SKM

SKM is a leading multi-disciplinary projects firm employing over 7,000 people with a functional and active global reach. The business has skills and capability in strategic consulting, engineering and project delivery.

Since the early 90s, SKM has been actively involved in providing technical advice, support and assistance to Australia's scientific and related pursuits in the Antarctic, sub-Antarctic and the Southern Ocean. Support has also been provided to other countries' activities south of Tasmania.

SKM has been an active member of the Tasmanian Polar Network since its inception and is committed to the provision, through its Hobart offices, of technically and scientifically sound consulting services in the sector.



ROB HARMAN

P. +61 (0) 3 6221 3711
E. rharman@globalskm.com
W. www.globalskm.com

SKYTRADERS

Skytraders Cold Climate Aviation Services is the primary provider of cold-climate aviation services for the Australian Antarctic Division. The company provides a critical air link between Hobart and the Australian Antarctic Territory, using an Airbus 319CJ.

Skytraders was the first and only operator of a twin-engine commercial airliner into Antarctica and has established itself as a world leader in cold climate aviation.

The development of a retractable ski system for the CASA 212 resulted in the first transport category aircraft to be put on skis in more than 40 years. The innovative ski design allows takeoffs from wheeled runways to a landing on snow or vice versa.

Skytraders has also assisted the wider Antarctic community, providing services for the American, Chinese, Italian, Korean and French programs.



DAN BURNABY

P. +61 (0) 417 144 178
E. dan.burnaby@skytraders.com.au
W. www.skytraders.com.au

SMITTEN MERINO

Smitten Merino produces a range of outdoor clothing suitable for Antarctic conditions.

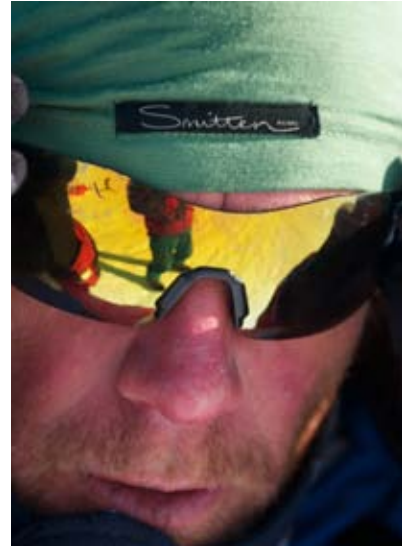
Smitten Merino outdoor clothing is spun from super-fine merino wool sourced from Tasmanian and other premium Australian wool-growing regions. All products are designed and made in Tasmania.

Smitten Merino wool is luxurious, super-soft and lightweight. Our thermals are famous for their great cut and comfort. The fabric wicks away moisture, is low-odour, warm when wet, breathable, fast-drying and machine washable. Skin contact with the superfine wool fabric does not cause itch or scratch.

Thermal products have been used by the Australian Antarctic Division, by police search and rescue teams and by numerous Antarctic adventurers including Eric Phillips and Don McIntyre.

The range is made in numerous weights and consists of leggings, long-sleeve crew tops, zip-neck tops with thumb holes, beanies, wool fleece jackets and pants and much more.

Smitten Merino's manufacturing procedure is stringent, entailing complete quality control. It is the first Australian company fully endorsed by Australian Wool Innovation and has won best exhibitor at Australia's biggest wool show.



CARL MASON

P. +61 (0) 3 6227 9266
E. admin@smittenmerino.com
W. www.smittenmerino.com

SOUTHERN CROSS EQUIPMENT

Southern Cross Equipment specialises in supplying cutting-edge equipment for difficult rope access and remote area rescue; plus the very best of clothing and footwear for extreme cold-weather environments.

More than 25 years of experience and a deep understanding of polar environments set the company apart and the staff pride themselves on providing the best range of hard and soft products for professionals in the field.

The Australian Antarctic Division, some of Australia's top educational institutions and organisations such as the Tasmanian National Parks Service, Australian Federal Police, State Emergency Services, NSW Ambulance and Fire and Rescue Services, and many sectors of the Australian Defence Force (including sections of the elite Special Forces) have chosen Southern Cross Equipment as a preferred supplier.

The Australian-owned, Sydney-based company services clients across the nation.

The company is one of a few preferred clothing and equipment suppliers to the Australian Antarctic Division, with a particular expertise in E.C.W. parkas, headwear, gloves/mittens, boots and ice climbing equipment.

Southern Cross Equipment is the Australian representative of some of the world's best manufacturers, including Baffin Polar Proven Footwear, Canada Goose down-filled clothing, Kahtoola snow-traction systems plus Yates Gear and Rock Exotica rope access and climbing equipment.



SPENCER McDONALD

P. +61 (0) 2 9286 1508
E. info@southerncross.net.au
W. www.southerncross.net.au

TASMANIAN SHIPPING SUPPLIES

Tasmanian Shipping Supplies, established in 1989, is a full-service ISO 9001:2001 ship Chandler and provider, servicing all Tasmanian ports. The range and scope of supply includes dry, fresh and frozen provisions, bonded stores, cabin stores, deck and engine stores, lifesaving equipment, construction materials, charts and publications.

Other services include the hire of plant and equipment and bonded storage.

Vessels and clients using TSS services include Antarctic stations, cruise ships, naval vessels, research ships, offshore rigs and support vessels, fishing trawlers and general cargo and bulk carriers.

The company operates from modern premises in Hobart, Devonport, Townsville and Melbourne and has Australia's eastern seaboard covered for all ship re-supply requirements.



RICHARD FADER

P. +61 (0) 3 6224 2510
E. rfader@fader.com.au
W. www.tasshipping.com.au

TASMANIAN WORLDWIDE SHIPPING

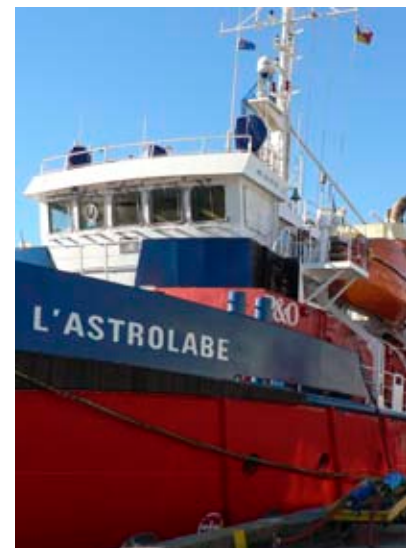
Tasmanian Worldwide Shipping is an independent Tasmanian-owned and operated shipping agency, freight forwarding and customs brokering company.

The Hobart business specialises in servicing marine science, research, re-supply, offshore, oceanographic, expedition and medium cruise vessels, including those operating in the Southern Ocean, sub-Antarctic and Antarctic.

International and domestic sea, air and road freight services are provided in both FCL (full container load) and LCL (less than container load) together with a full custom clearance and brokering service.

The company is able to assist with all port-related requirements including proclaimed and unproclaimed ports. The staff have many years of experience in the industry and are available 24 hours a day, 7 days a week to effectively and efficiently deal with any operational, logistical or general matters. For more than 30 years Tasmanian Worldwide Shipping personnel have worked and been associated with the Australian, Chinese, Norwegian, American, French, Italian, Japanese and German Antarctic, sub-Antarctic and Southern Ocean research and re-supply programs.

Tasmanian Worldwide Shipping prides itself in offering a high level of customer-focused service that is professional, capable, reliable and cost-effective.



STEPHEN PARODI

P. +61 (0) 3 6223 2000
E. stephen.parodi@twws.net
W. www.twws.net

TASPORTS

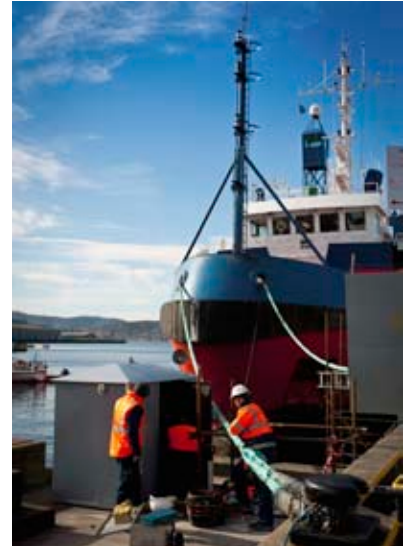
Tasports provides full port services for Antarctic research and supply vessels in Hobart. The company has responsibility for the management and operation of 11 Tasmanian ports, delivering a diversity of services across a significant geographic spread.

Hobart is the gateway for international and regional Antarctic research and supply, as well as research vessels accessing the Antarctic, sub-Antarctic islands and Southern Ocean waters. Polar-related business is growing and is a key market segment for Tasports.

Vessel operators have access to a full range of port services in Hobart, including pilotage, towage, fuel, provisioning, stevedoring, secure expedition storage facilities, cold storage, quarantine and maintenance.

Hobart is the home base for Australia's Antarctic research and re-supply vessel *Aurora Australis* and for the French support vessel *Astrolabe*. Nations including France, Russia, the United States and Japan have also used Hobart as a gateway to the Antarctic. A number of Antarctic cruise ship operators use the port and its facilities.

Tasports is focused on developing the port of Hobart and its infrastructure to meet specific customer, stakeholder and industry requirements. This includes a \$7 million dedicated Antarctic and cruise facility operating from 2013.



KAREN REES

P. +61 1 300 366 742
E. karen.rees@tasports.com.au
W. www.tasports.com.au

TAYLOR BROS

Taylor Bros, a third-generation family business headquartered in Hobart, is a diversified engineering company providing a wide range of services to the general marine industry and defence, offshore, and Antarctic industries throughout Australia and overseas.

Taylor Bros specialises in internal fit outs for all types of shipping and the offshore industry and builds modular accommodation units especially suited to extreme weather conditions in remote locations. The company has worked extensively with the Australian Antarctic Division providing specialist outfitted accommodation units for Australia's Davis and Casey Stations using structurally modified shipping containers that house up to 60 people, as well as workshop and storage areas.

Our prefabrication approach minimises the amount of work conducted on site, compressing the project schedule.

Taylor Bros also undertakes major projects for defence organisations and businesses in the maritime and oil and gas sectors. The company's marine engineers have special expertise in the fabrication and installation of ship sections, seasonal lay-ups and engine room rebuilds, maintenance programs and the provision of purpose built machinery and equipment.

The company utilises a Business Management System that has been certified as a Quality Management System to ISO 9001:2008.



ADAM MUCCI

P. +61 (0) 3 6273 3700
E. amucci@taylorbros.com.au
W. www.taylorbros.com.au

TURO TECHNOLOGY PTY LTD

Turo Technology Pty Ltd has been manufacturing and supplying marine and freshwater analytical instruments for more than 20 years. Turo's flagship products – the Devil XBT and Quoll XBT data recorder systems – are used on Australian, French and South African Antarctic re-supply vessels.

Both systems have been designed for use with Lockheed Martin Sippican launchers and expendable probes to record ocean temperature profiles.

The compact and lightweight Devil XBT box connects via USB to a shipboard computer or laptop for simple and portable operation. It has been adopted quickly and now has users in oceanographic research, defence, meteorological, survey and consulting industries.

The Quoll XBT has all the advanced features of the Devil XBT, but also offers – for the first time – a direct network interface to the XBT recorder.

To enhance flexibility, Quoll supports Power over Ethernet (PoE) on board, allowing the unit to be powered directly from an ethernet cable. This frees the unit from cumbersome external power supply requirements.

Turo XBT software is very simple and intuitive to use. A number of data formats are available and detailed metadata are collected. Additional features include GPS input, on-screen global charts, climatology overlays, quality control processing of profiles and telemetry.



ALEX PAPIJ

P. +61 (0) 3 6236 9511

E. papij@turo.com.au

W. www.turo.com.au

VEOLIA ENVIRONMENTAL SERVICES

Veolia Environmental Services Australia (VESA) is part of Veolia Environnement, a global company committed to providing sustainable services to the water, transport, energy and environmental sectors.

Veolia Environnement is committed to the preservation and clean-up of Antarctica. It has donated 240 specialised containers to the Australian Antarctic Division and provided specialist resource support to clean up historic waste deposited in Antarctica. Use of these containers is also available, by arrangement, to other countries.

VESA manages waste returned from Antarctica and the sub-Antarctic regions by international and Australian expeditions. The company's practical experience and resource capability enable it to manage this waste to the highest environmental standard. VESA is accredited to ISO 9001, ISO 14001 and AS4801 for all its activities.

The range of VESA services available to the international Antarctic community includes: solid and liquid waste collection; sorting; recycling; treatment and final disposal of residuals.

During service delivery, VESA seeks to maximise the diversion of waste from landfill into beneficial reuse. VESA can provide on-site and desktop cleaner production and waste audits/reporting, hazardous/quarantine waste disposal, and industrial cleaning.



DAVID WRIGHT

P. +61 (0) 3 6244 0004

E. david.wright@veolia.com.au

W. www.veoliaes.com.au

WILLIAM ADAMS PTY LTD

Tasmanian Caterpillar dealer, William Adams Pty Ltd, specialises in the supply of Caterpillar® and Challenger machines for the Antarctic. The company's focus is the building of quality equipment with attention to every detail; delivering machines that can cope with harsh Antarctic conditions; and providing whole-of-life product support.

William Adams has delivered more than 100 machines to the frozen continent during a collaboration of more than 50 years.

Specially modified Caterpillar machines are adapted for coastal operations and heavy inland traverse work across the continent. Supply projects have included transport, material handling, road making, snow clearing, site preparation and remediation. The company also designs and manufactures specialised machine attachments to meet the requirements of unique Antarctic applications.

In 1990, William Adams introduced the Caterpillar rubber-tracked Challenger tractor to Antarctica and later began the manufacture of a rubber-track trailer using the Challenger Mobil-Trac system that operates across rock, snow or ice.

Today many Antarctic programs use William Adams "Traverse Special" Challenger for their scientific and cargo transport operations. More than 30 units delivered to Australian, French, Chinese and US customers have demonstrated that the Challenger "Traverse Special" can operate successfully in -40°C inland temperatures with very little downtime or maintenance.



PETER FEWKES

P. +61 (0) 3 6249 0566
E. peterfewkes@wadams.com.au
W. www.williamadams.com.au



OTHER TASMANIAN POLAR NETWORK MEMBERS

ACE CRC – University of Tasmania

www.acecrc.org.au

Australian Antarctic Division

www.aad.gov.au

BOC Gases

www.boc.com.au

CCAMLR

www.ccamlr.org

Clarence City Council

www.ccc.tas.gov.au

CSIRO

www.csiro.au

Department of Foreign Affairs and Trade

www.dfat.gov.au

Hobart City Council

www.hobartcity.com.au

Huon Valley Council

www.huonvalley.tas.gov.au

Institute of Marine & Antarctic Studies

www.imas.utas.edu.au

Inchcape Shipping Services

www.iss-shipping.com

Industry Capability Network Tasmania

www.icntas.org.au

Mawson's Huts Foundation

www.mawsons_huts.org.au

Ocean Frontiers Pty Ltd

PO Box 547 Kigston TAS 7051

Quarantine Tasmania

www.dpiw.tas.gov.au

Tasmanian Museum and Art Gallery

www.tmag.tas.gov.au

Tweezy New Media

www.tweezy.com.au



TASMANIAN POLAR NETWORK

C/- Antarctic Tasmania
GPO Box 646, Hobart
Tasmania, Australia 7001

ANZ Centre
22 Elizabeth Street, Hobart
Tasmania, Australia 7000

P. +61 (0) 3 6233 5493

E. antarctic@development.tas.gov.au

W. www.tasmanianpolarnetwork.com



SUPPORTED BY



Photo: Paul Hubner, President of Baffin Polar Proven Footwear for Southern Cross Equipment